

Temple University

College of Public Health

Guide to Undergraduate Majors and Minors
2024-25 Academic Year



Table of Contents

Communication Sciences and Disorders	5
Speech, Language and Hearing Science	5
SLH Job Description	6
Health Services Administration and Policy	7
Health Information Management	7
HIM Job Description	8
Health and Rehabilitation Sciences	9
Health Professions	9
HP Job Description	10
Health Studies	11
Health Studies Job Description	12
Recreational Therapy	13
RT Job Description	14
Exercise and Sport Science	15
ESS Job Description	16
Kinesiology	17
KINS Job Description	18
Nursing	19
Nursing Job Description	20
Social Work	21
Social Work Job Description	22
Social Behavioral Sciences	23
Public Health	23
PH Job Description	24
CPH Minors & Certificates	25

The Temple University College of Public Health is part of a new movement that transforms public health for the 21st century.

The mission of Temple University's College of Public Health is to prepare our students to become researchers, practitioners, and educators. Collaborating across health-related disciplines, we address community needs, create evidence-based solutions, and deliver effective, compassionate care.

Statement of Goals:

The following is a statement of goals for the College of Public Health in the areas of academics and instruction, research and scholarship, service and community engagement, innovation and entrepreneurship, and alumni engagement and development:

Goal #1: Academics and Instruction – To provide high-quality, comprehensive and interdisciplinary instruction, through didactic education and engagement in the community, in order to prepare the next generation of health practitioners and researchers to be ready to address the public health and social welfare demands of the day.

Goal #2: Research and Scholarship – To develop and grow a diverse body of research that reflects the needs of the community and the expertise of our faculty, and to provide our undergraduate and graduate students with research experiences that will expand the existing evidence base, develop new health interventions, inform policy, and translate research findings into practice to improve the health of populations.

Goal #3: Service and Community Engagement – To engage with the community at the regional, national and global levels by translating and disseminating academic expertise into practice. Across the college, such services may include needs assessments, planning, evaluations, policy analysis, and clinical services including healthcare, counseling and various therapeutic services. To serve as a resource to public health practitioners, health professionals, researchers, and elected officials who work to maintain and improve the public's health.

Goal #4: Innovation and Entrepreneurship – To enhance the learning experience for students and faculty alike through the use of existing and emerging technologies, as well as to develop new and innovative approaches to public health practice and research.

Goal #5: Student and Alumni Engagement and Development – To ensure the success of the college's mission to promote interdisciplinary collaboration in practice and research that extends beyond the walls of the institution, by developing new resources to support our existing students and by actively engaging with alumni.

The College of Public Health offers fully accredited undergraduate and graduate programs in seventeen areas, including seven bachelors', eleven masters', four accelerated degree options, and eleven doctoral degrees.

College of Public Health Departments & Undergraduate Programs

Department of Communication Sciences and Disorders

- Bachelor of Arts in Speech, Language and Hearing Science
- Undergraduate Certificates:
 - American Sign Language
 - Linguistics

Department of Health Services Administration and Policy

- Bachelor of Science in Health Information Management
- Undergraduate Minors
 - Health Information Management
 - Global Health
 - Health Policy and Management

Department of Health and Rehabilitation Sciences

- Bachelor of Science in Health Professions
- Undergraduate Certificate:
 - Emergency and Sports Injury Management
- Bachelor of Arts in Health Studies
- Bachelor of Science in Recreational Therapy
- Bachelor of Science in Exercise and Sport Science
- Bachelor of Science in Kinesiology

Department of Nursing

- Bachelor of Science in Nursing

School of Social Work

- Bachelor of Social Work

Department of Social and Behavioral Sciences

- Bachelor of Science in Public Health
- Undergraduate Minors:
 - Applied Epidemiology (housed in the Department of Epidemiology and Biostatistics)
 - Nutrition
 - Public Health

Department of Communication Sciences and Disorders

Bachelor of Arts in Speech, Language and Hearing Science

The Bachelor of Arts in Speech, Language and Hearing Science (SLH) prepares students for graduate study in Speech-Language Pathology and in Audiology. It is also a valuable major for the pursuit of graduate study in Special Education, Early Childhood Education, English as a Second Language, as well as other health professions. Undergraduates in our major learn about speech and language development and disorders, linguistic structure of language, the sciences of speech and hearing as well as the human nervous system, among other topics. They have opportunities to participate in clinical work with children and adults and to engage in research with faculty mentors. There is a language requirement which can be fulfilled with foreign language or with American Sign Language.



Speech Language Hearing Facts

Speech-Language Pathologists and Audiologists provide services to clients across the lifespan, from infants to the elderly. They work in hospitals, schools, rehabilitation centers, nursing homes, preschools, daycare centers and private practices. They work with individuals whose communication challenges range from the very minor to the very severe. The need for Speech-Language Pathologists and Audiologists continues to grow.

Graduate school is required to obtain entry-level positions.

ASHA is the American Speech Language Hearing Association: www.asha.org

Graduates with a major in Speech, Language & Hearing Science will satisfy Standard III-B (Basic Communication Processes) of the Knowledge and Skills Assessment required by the American Speech-Language-Hearing Association.

Alumni Highlights



Hailee Scarafile graduated in 2021 with her BA in Speech, Language and Hearing Science. After graduating, she received a Fulbright Scholarship and is currently pursuing her Masters in Speech-Language Pathology at the University of Sheffield in England. Hailee plans to return to New Jersey and work with adults with motor speech disorders.



Sonali Shah completed both her BA and MA in Speech, Language, and Hearing Science here at Temple. She currently works in early intervention with infants. She is also an Autism Spectrum Disorder coordinator, and completes developmental behavioral assessments

Example Job Description

Speech, Language Hearing



St. Christopher's
Hospital for Children

Speech Pathologist

Description

Job Summary: A Speech-Language Pathologist will be responsible for the assessment, treatment planning, therapeutic interventions, re-assessments and discharge planning of patients referred for Speech-Language Therapy as well as Swallow Evaluation and treatment. The Speech-Language Pathologist will also participate in program development, quality improvement, problem solving and productivity improvement in a flexible interdisciplinary fashion.

Skills & Abilities: This position is responsible for the assessment and treatment of patients who persistently demonstrate communication deficits in any modality: speaking, listening, reading and/or writing. This position is also responsible for any patient who has difficulty managing his/her secretions or in swallowing. This may include a variety of diagnoses.

Qualifications:

Training & Education: CPR. Master's Degree in SLP.

Experience: Required: Pediatric Affiliation. Desired Previous 1-2 years Pediatric Experience

Supervisory Responsibility: N/A

Required Licenses: Licensed in Pennsylvania

JOB: Therapy And Rehabilitation

PRIMARY LOCATION: Philadelphia, Pennsylvania

HOSPITAL LOCATION: St. Christopher's Hospital For Children

JOB TYPE: Full-Time

SHIFT TYPE: Days

Duties:

- Monitor patients' progress and adjust treatments accordingly.
- Develop or implement treatment plans for problems such as stuttering, delayed language, swallowing disorders, or inappropriate pitch or harsh voice problems, based on own assessments and recommendations of physicians, psychologists, or social workers.
- Write reports and maintain proper documentation of information, such as client Medicaid or billing records or caseload activities, including the initial evaluation, treatment, progress, and discharge of clients.
- Participate in and write reports for meetings regarding patients' progress, such as individualized educational planning (IEP) meetings, in-service meetings, or intervention assistance team meetings.
- Evaluate hearing or speech and language test results, barium swallow results, or medical or background information to diagnose and plan treatment for speech, language, fluency, voice, or swallowing disorders.
- Complete administrative responsibilities, such as coordinating paperwork, scheduling case management activities, or writing lesson plans.
- Develop individual or group activities or programs in schools to deal with behavior, speech, language, or swallowing problems.
- Instruct clients in techniques for more effective communication, such as sign language, lip reading, or voice improvement.
- Administer hearing or speech and language evaluations, tests, or examinations to patients to collect information on type and degree of impairments, using written or oral tests or special instruments.

Department of Health Services Administration & Policy

Bachelor of Science in Health Information Management

Health Information Management (HIM) professionals design and manage health information systems, with special attention to quality and privacy of health information, in a wide range of settings such as hospitals, managed and ambulatory care, insurance and pharmaceutical companies, consulting firms, and public health organizations.

To prepare for an exciting career that combines expertise in clinical medicine, management, information technology, electronic health record systems, and finance, Temple University offers a Bachelor of Science degree in Health Information Management (BSHIM).



Health Information Management Facts

HIM has recently been identified as one of the top fastest growing professions in the U.S. In fact, the demand for HIM professionals will increase by 11% between 2018 and 2028, according to the US Bureau of Labor Statistics (BLS). Based on a survey of Temple's graduates, 80% of graduates had secured a job at the time of graduation.

Program consists of one professional clinical internship, which occurs during the spring semester of the senior year.

Certification

Students enrolled in the HIM program and in the last term of study are eligible to apply and sit for the examination of the American Health Information Management Association for the nationally recognized certification as a **Registered Health Information Administrator (RHIA)**.

Alumni Highlights



Melinda Gluck

UHS, Digital and Mobile App Analyst

Example Job Description

Health Information Management



DRG Auditor, Payment Integrity & Audit

Corporate and Financial Investigations Department (CFID) is responsible for the detection and investigation of all potential areas of fraud, waste and abuse against IBC Family of Companies. The CFID Support Group's goal is to assist the Corporate and Financial Investigations Department by accumulating information to support fraud, waste and abuse investigations, and provider audits, by creating trend analysis across all IBC lines of business. CFID Support gathers and evaluates information from a variety of data collection sources for fraud, abuse, audit and questionable billing patterns and trends.

The DRG Auditor is responsible for the auditing of inpatient medical records to validate the accuracy of DRG assignment. The DRG auditor will determine if the ICD 10 diagnosis and procedure codes are correctly assigned and sequenced based on clinical support, coding rules and guidelines. The auditor would be responsible to provide a detailed rationale for each medical record review that resulted in a DRG change including supporting references. The DRG auditor will also validate the correct discharge status codes.

Responsibilities may include:

- Audit claims to validate DRG assignment
- Manually screen data files to identify claims for audit
- Write DRG dispute letters citing references and clear clinical rationale to support the dispute
- Identify patterns of provider billing abuse or fraudulent cases.
- Perform audits that involve verifying charges, coding, and identifying ineligible benefits, and other elements as applicable.
- Analyze, verify, and adjust provider billing based primarily through independent field and desk reviews of provider medical and billing records.
- Work closely with analysts, auditors, and investigators in CFID.

Department of Health and Rehabilitation Sciences

Bachelor of Science in Health Professions



The **Bachelor of Science in Health Professions (BSHP)** is a degree which helps the student enter their chosen professional graduate program prepared with the prerequisites necessary for many of the health professions, e.g., physical therapy, athletic training, occupational therapy, physician assistant practice, certified anesthesiology assistant, pharmacy, etc.

The **Health Professions** major will better introduce students to a broader spectrum of health professions while still allowing students to tailor their education to best prepare them for their desired career through the strategic use of electives. Moreover, the interdisciplinary training across multiple disciplines will best prepare our graduates to enter the health workforce.

Health Professions Facts

The HP degree offers a general studies program that includes a Public Health and Interdisciplinary Core and an expanded Math and Sciences. Students are advised to maintain a minimum grade point average of 3.00 (B) since entry into graduate programs in the health professions is highly competitive. Although all required professional application courses must be completed with a minimum grade of C to count toward graduation, a grade of B or better in the specific prerequisites is required for almost all health profession graduate programs.

The B.S. in Health Professions is also the major in the College of Public Health linked to the Accelerated Program for Physical Therapy (the 3+3 Program). Students complete their major requirements in three years, and if accepted to the D.P.T. they begin their PT requirements in the summer before their fourth year of undergraduate.

The B.S. in Health Professions is linked programmatically to the M.S. in Athletic Training in the Department of Health and Rehabilitation Studies. Students complete an accelerated timeline of the HP undergraduate requirements (3 years and summer classes). They are accepted to both the B.S. and the M.S. program and move directly into the M.S. program requirements in Summer after their third year of coursework.

Students must apply to these linked advanced degree programs during their Freshman year, and transfer students are not eligible for admission.

Alumni Highlights



Nicole Umeweni
BS Health Professions 2022
Medical Student Penn Medicine



Jordan Ragsdale
BS Health Professionals
MSAT 3+2 Direct Entry
EMT Class Testimonial:

"I have learned so much from you during this class and really appreciate the time you put in to teach us and prepare us for the NREMT. This class definitely took me out of my comfort zone but has helped my confidence a lot. I have always wanted to be an EMT, and I'm so excited that I am almost at that point."



Remigio C. Dinio

BS Health Professions

(3+3) DPT Student, Anticipated Graduation 2025

"The biggest factors within the BSHP that prepared me for the Doctor of Physical Therapy Program were the courses. Classes like Human Anatomy, Functional Anatomy, Cultural Competency, and Biomechanics laid the groundwork for the information I would learn in the DPT program, including how each body system works, how to identify muscular and skeletal locations on the body, the physics behind how the body moves, and the importance of being an unbiased and compassionate healthcare provider. The BSHP gave me the knowledge that any future healthcare professional will need to succeed."

Example Job Description

Health Professions



Clinical Research Assistant I

Job Summary

Under the direct supervision of the study team assists in the coordination of the details of the human research subject study and documentation concerning study protocols.

Job Responsibilities

- Providing technical and clinical support in the conduct of clinical studies
- Filing and office organization.
- Patient/research participant scheduling/history.
- Data collection; data entry; data management.
- Laboratory procedures.

- Consent subjects, with appropriate authorization and training.

- Research Study Compliance
- Adhere to an IRB approved protocols.
- Comply with Institutional policies, SOPs and guidelines.
- Comply with federal, state, and sponsor policies.

May be called upon to:

- Document and Report adverse events.
- Maintain study source documents.
- Complete case report forms (paper and electronic data capture).

Required Licenses, Certifications, Registrations

Required Education and Experience

- Required Education: AA in a related field

- Required Experience: 1+ year(s) relevant clinical research experience
- Preferred Education, Experience & Cert/Lic
- Preferred Education: BA/BS in a related field
- Additional Technical Requirements

Bachelor of Arts in Health Studies

The **Bachelor of Arts in Health Studies (BAHS)** is a degree completion program exclusive to internal and external transfer students who are interested in health fields which do not require a breadth of bench sciences. **This program does not directly admit new incoming, first-year students.** Incoming first year students interested in Health Profession should first consider the BS in health professions. Students interested in this program should have 60 credits and a GPA around or below 3.0. Students can utilize the flexibility of this program to explore a wide range of interests and to tailor their degree to their own interests in areas such as public health, health information management, or psychology.

The **Health Studies** major will have students taking a wide range of courses in public health, anatomy and physiology, statistics, and health care. This interdisciplinary approach will help prepare students to become professionals who seek healthcare solutions focused on interdisciplinary approaches and upstream interventions resulting in innovative solutions to patient and health care issues.

Health Studies Facts: A plan for success for students interested in healthcare careers such as, Health care administration, accelerated bachelor's degree in nursing (ABSN), etc.

Flexible Curriculum:

Students will have the opportunity to work with academic advisors and tailor their degree to their goals and interests.

Interdisciplinary Curriculum:

Coursework will provide background in the science of the human body, determinants of health, health communication, nutrition, health care systems, and much more.

Extraordinary Educators:

Students take courses from leaders and innovators across fields in the College of Public Health. These educators use innovative classroom approaches and a wealth of practical experience to bring real world lessons and skills to the curriculum.

Alumni Highlights



Lily Amuzie

Patient Services Specialist at Penn Medicine



Janelle Isley

Program Support Assistant at The National Institutes of Health

Example Job Description



The Health Center Administrator is responsible for oversight of daily operations of the health center including management of medical support team, monitoring patient flow, assisting with problem resolution, training staff, maintaining various regulatory compliance, and providing oversight of front-end financial aspects. This a high visibility position with frequent interaction with the general public, patients and their families, medical providers, and other support staff. This position requires a deep understanding of the roles and duties of reporting staff, and he/she must be able to carry out those functions when the need arises or otherwise solve problems to maintain the highest level of service to our patients.

Responsibilities:

- Serve in a supervisory capacity to medical support staff which includes Medical Assistants, Medical Receptionists, and various students. Responsible for completing performance evaluations on staff and providing objective feedback on individual performance.
- Coordinate daily activities of medical support staff including making work assignments and effectively communicating this to the team
- Provide customer service in responding to inquiries/complaints from patients, outside agencies, and internal departments/programs
- Monitor front desk operations to ensure all revenue cycle policies/procedures are executed. Ensure that registration is completed appropriately, insurance eligibility verified, and appointments reconciled.
- Manage provider schedules to ensure timely care of patients, appropriate daily volumes, and completion of all chart notes in a timely fashion
- Oversee collection, documentation, and reconciliation of daily patient payments (co-pays/self-pays)
- Lead efforts in continuous quality improvement to increase efficiency and improve quality of services
- Assist team with problem resolution and escalate to senior staff when appropriate
- Provide ongoing training to existing staff, as well as training/orienting new staff
- Assist in the recruiting, hiring, and interviewing process of the medical support staff
- Work with senior staff to develop, disseminate, and implement policies/procedures
- Order medical and office supplies in a fiscally responsible manner
- Maintain compliance with CLIA, OSHA, Joint Commission, NCQA, VFC, Meaningful Use, and other regulations
- Assume medical support staff duties for absences and temporary staff shortages
- Assist senior staff with special projects and tasks as needed
- Other duties as assigned

Education:

- A bachelor's degree in health care administration or related field

Experience:

- 3+ years recent experience working in health care administration

Salary:

- Based on education and experience.

Department of Health and Rehabilitation Sciences

Bachelor of Science in Recreational Therapy

The **Recreational Therapy (RT)** program offers undergraduate and graduate programs preparing students to use structured recreational activities as a means of psychosocial adaptation, health promotion, community engagement, rehabilitation, and life quality for individuals with disabilities across the lifespan. Students will learn in an engaging and hands-on environment and will have option to focus on specific populations such as geriatrics, pediatrics and mental health as well as settings such as rehabilitation, residential and community-based settings.

Students exit the program well prepared to embark on their career in RT. Temple's **Recreational Therapy program** is recognized as one of the top programs in the country.

Recreational Therapy Facts

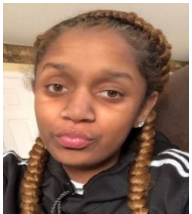


You can practice RT with an undergraduate degree, but the graduate degree is very useful if you would like to become a manager, participate in research or further your knowledge and skills. The Recreational Therapy program offers an accelerated M.S. degree program, which qualifying students can apply to in their junior year and allows them to graduate with both a BS and MS in RT within 5 years.

The Recreational Therapy program is designed to exceed certification requirements mandated by the National Council for Therapeutic Certification (NCTRC). Temple's pass rate on the exam is among the highest in the country!

The BS Program has accreditation from the **Commission on Accreditation of Allied Health Education Programs/Committee on Accreditation of Recreational Therapy Education**.

Alumni Highlights



Jada Larmond, CTRS

RT Mental Health Worker at Gemma Services

2023 graduate in BS in Recreational Therapy; currently enrolled in Accelerated MS program

"Being within this program helped me grow as an individual both physically and mentally. I have been able to look at therapy in a different way and find the career that allows me to be myself while also helping others reach their own personal goals."



Bowen Chen, CTRS

Assistive Technology Educator at Inglis House

2023 graduate in BS in Recreational Therapy

"One thing that I loved about the RT program is how this program allowed me to increase my creativity and confidence while working in a fun learning environment."

Example Job Description

Recreational Therapy



CERTIFIED THERAPEUTIC RECREATION SPECIALIST

Summary: We are currently seeking a Full Time Certified Therapeutic Recreation Specialist (CTRS) to provide evaluation, treatment, and discharge of patients referred to the Therapeutic Recreation service. The CTRS is an integral professional to meet the leisure and recreational needs of patients.

Essential Accountabilities:

- Plans, organizes, and implements recreation therapy to referred patients through individualized therapy sessions, group activities, leisure counseling and community outings for effective improvement in patient's physical, mental, and social well-being.
- Manages a full patient caseload as defined by the program where the therapist provides services. This includes patient evaluations/re-evaluation, treatment planning and implementation, development of resources for discharge, discharge planning, patient/caregiver education, leading patient groups and documentation as specified by the program. This may also include reporting in patient care conference and participating in patient/family/team meetings.
- Provides services on assigned weekends and holidays.
- Supervises student interns, volunteers, and new staff members as assigned with regard to Recreation Therapy.
- Must be able to stand, walk, stoop, and lift in order to effectively treat patients.
- Must be able to exert 50 pounds of force while lifting patients and/or devices.
- Must be able to have sufficient standing balance to guard ambulatory patients.
- May participate in the planning and implementation of hospital wide recreational activities including special events, leisure outings and evening and weekend activities, and community support groups.
- Attends all appropriate meetings including department meetings, programmatic team meetings, unit meetings, and recreation therapy specific meetings.
- Participates in and leads appropriate departmental and interdepartmental inservice educational programs.
- May participate in clinical studies, reporting, publishing, and research projects on behalf of Magee.
- May represent the hospital and department at professional conferences and seminars.
- Performs other related job duties as assigned.

Qualifications:

- Graduate of an accredited College or University with a minimum of a Bachelor's Degree in Therapeutic Recreation.
- Valid certification from the National Council for Therapeutic Recreation Certification. CPR certification required.
- 0-3 years' experience as a Therapeutic Recreation Specialist; clinical experience in acute rehabilitation or outpatient neurologic rehab preferred.
- Magee Rehabilitation Hospital is an equal opportunity employer. We do not discriminate on the basis of race, color, gender, gender identity, sexual orientation, age, religion, national or ethnic origin, disability or protected veteran status.

Bachelor of Science in Exercise and Sport Science

The Exercise and Sport Science program focuses on the science and practice of health, fitness, and sports performance. This program prepares students for a range of professional certifications and physical fitness careers. The Exercise and Sport Science program focuses on providing training to work with individuals and small groups in two areas of emphasis:

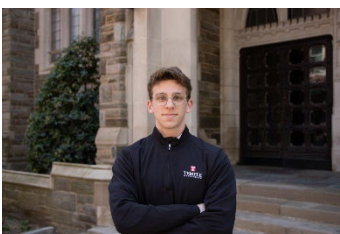
- **Exercise Physiology:** the application of exercise principles involving populations that are either healthy or have pre-existing medical conditions.
- **Sports Performance:** the application of sport science principles involving populations whose primary goals are competitive and related to sports performance.

Our students pursue a wide range of pathways, including workforce opportunities (clinical exercise physiology, cardiac rehabilitation, strength and conditioning, sport performance, and personal training) and pursuing advanced studies following graduation from the Exercise and Sport Science program.

To prepare students for these post-graduation pathways, our curriculum incorporates didactic training and hands-on learning experiences required to sit for several professional examinations. We thoughtfully integrate multiple hands-on learning experiences that include laboratory experiences, service-learning opportunities, and a culminating internship that provides students with real-world experience, implementing what was learned in the classroom throughout the Exercise and Sport Science program.



Student Testimonials



Adam Fields

Current ESS Major, Planning to Pursue Doctor of Physical Therapy

“Before coming to Temple, I never quite knew what I wanted to study or pursue post-graduation. Finding the Exercise and Sport Science program has become a pivotal piece of my future puzzle and has opened many doors for me. I have learned so much as an Exercise Science major and cannot be more excited to share my knowledge with whoever my path leads me to. I have been exposed to so many amazing professors, professionals, and even fellow classmates that I believe are such an important part of this program.”

Lizzie Germer

Current ESS Major, Plans to Work as a Personal Trainer in the Corporate Wellness Industry

“I have enjoyed my experience with the ESS program. This program provided me with extensive knowledge of the human body and its functions, exercise effects and adaptations, issues of public health in society, and how to help populations become healthier through nutrition and exercise. This program thoroughly addresses the social determinants of health and how to address health disparities. I have learned how to assess clients and create successful training programs according to client goals. Through my education and internship experience I have gained the confidence I need to work with clients and be successful in the fitness/health industry.”

Example Job Description

Exercise & Sport Science



Power Train Sports & Fitness

Sport Performance Coach

The Performance Coach contributes to Power Train's success by conducting themselves in a professional demeanor that demonstrates the company mission and vision. They are also responsible to help improve the overall success of the business through new business development and client retention.

The Performance Coach will deliver on all of the performance objectives set forth by the company. In addition, the Performance Coach will focus on the team delivering unmatched results for our clients in a fun, engaging and competitive environment.

Key Job Responsibilities

Responsibilities and job functions include, but are not limited to:

- Model and promote Power Train mission and values through appropriate behavior, appearance, words and actions
- Uphold company mission by delivering training sessions that meet the Power Train standards for ratios and program design
- Responsible for the daily execution of all daily lead generating sales activities
- Responsible to write client programs
- Effectively conduct Free Trials designed to drive new business
- Execute on all daily sales and new business development activities
- Engage in opportunities to grow client count through high quality interactions and creative training sessions designed to drive overall membership growth and retention
- Ensure that the facility remains surgically clean, by executing on your daily cleaning and maintenance responsibilities
- Work to up-skill yourself through continuing education and self-development

Desired Skills and Experience

- College degree in Sports Management, Exercise Science, or National Strength and Conditioning Association
- Prior experience with coaching and/or sports performance training is a plus
- Able to perform and excel in a fluid and dynamic work environment
- Customer service orientation
- Results oriented, driven to succeed
- Must have a passion for sports, fitness and health
- Strong work ethic

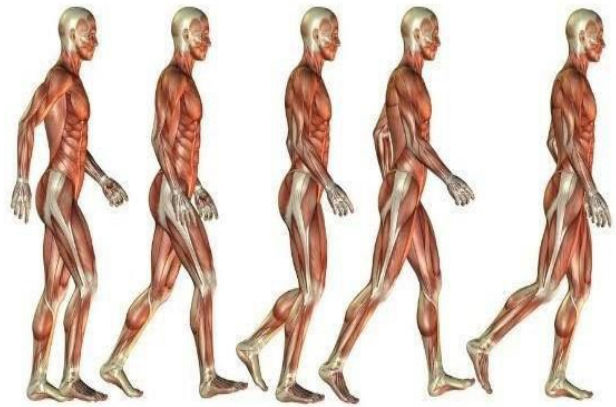
Bachelor of Science in Kinesiology

The Kinesiology program prepares students to enter a variety of jobs in the field of physical activity, health promotion, and fitness/wellness. Students learn about the field of kinesiology through an interdisciplinary curriculum that provides students with the basic foundations of movement, which are then applied to helping communities and populations be healthier and more active.

There is a growing demand for professionals skilled at integrating physical activity, health, and well-being into community settings. This demand is expected to continue growing in the future, particularly since physical activity is one of the most important health strategies for preventing and managing chronic diseases.

Our students pursue a wide range of pathways, including workforce opportunities (physical activity director, corporate wellness coordinator, fitness trainer/instructor, health club/spa manager, fitness/wellness manager, and community recreation manager) and pursuing advanced studies, following graduation from the Kinesiology program.

To prepare students for these post-graduation pathways, our curriculum incorporates didactic training and hands-on learning experiences. We thoughtfully integrate multiple applied learning experiences, laboratory courses, and service-learning opportunities into the Kinesiology program field of study.



Student Testimonial



Madelyn Garland

Current Kinesiology Major

“I have had professors who have inspired me and introduced me to career options and opportunities that I never knew existed. I received guidance from so many people in the department who realized my potential before I ever did. Because of them, I have been able to partake in an internship and gain hands-on knowledge of the industry. Exposure to so many different areas of healthcare and public health led me to discover a new passion. Now, I am currently in the process of interviewing for Clinical Exercise Physiology graduate programs and I am confident that what I have learned and achieved over the past four years has set me up for success.”

Example Job Description

Kinesiology

Future

Our Company: Future is an emerging health and fitness technology startup with a mission of leveraging technology to expand the reach one coach can have in order to ultimately create preventative healthcare that is both accessible and affordable to anyone, anywhere. We believe that everyone wants to live healthier, more active lives, but they struggle to find the support and guidance necessary to be successful.

Full Job Description

This is not some algorithm, it is real coaches helping real people, in real time, anywhere in the world.*

This is a fully remote, salaried position with benefits.

You Will:

- Develop fitness programs with individuals to create routines that assist clients in reaching their fitness goals
- Maintaining constant high level of communication and client contact through web and mobile applications to ensure goals are being met
- Update training plans and/or re-evaluate clients as needed to ensure optimal outcomes
- Participate in cross-functional teams to assist in company growth and performance operations
- Collaborate with our engineering & product team to continually enhance coaching tools and client experience

You Have:

- Bachelor's or Master's Degree in Exercise Science, Exercise Physiology, Sport Science, Sport Psychology, Kinesiology, Health and Wellness or a related field
- 1-2 years of relevant experience in coaching or training with elite professional and collegiate athletes or in a general population setting
- CSCS, NASM, SCCC, ACSM, CFSC (preferred)

Job Type: Full-time

Benefits:

- 401(k)
- Dental insurance
- Flexible spending account
- Health insurance
- Paid time off
- Parental leave
- Vision insurance

Schedule:

- Monday to Friday

Department of Nursing

Bachelor of Science in Nursing

The **Bachelor of Science (BS) in Nursing** provides the foundation to prepare expert nursing clinicians, educators, and leaders focused on primary health care for underserved and vulnerable populations.

Changes to the nation's healthcare system are demanding innovative and dedicated nurses with exceptional clinical experience and a strong background in evidence-based practice, the latest technology and strong leadership abilities. The Department of Nursing prepares graduates for the practice of professional nursing through rigorous academic and clinical coursework grounded in nursing science and related biological sciences, social sciences, and the arts.



The mission of the Temple University **Department of Nursing** is to provide excellence in nursing education, research, practice, and service to develop nursing professionals who will improve health outcomes for individuals, families, and communities. The faculty of the Department of Nursing believes that health care is a basic human right. The faculty addresses the complex interactions of the determinants of health affecting local and global communities.

Students must apply to the BSN Program by February 1st. Students ARE NOT permitted to transfer into the BSN program without official acceptance into the program. Please contact an academic advisor for more information regarding the application process.



Alumni Highlights



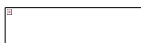
William Clooney, RN
May 2017 B.S. in Nursing

Student is employed at Bryn Mawr Hospital as an Intensive Care Unit Registered Nurse



Catherine-Lee Holmes
May 2019 B.S. in Nursing

Student is employed at Virginia Hospital Center as a Registered Nurse on the Oncology Medical



Example Job Description

Nursing



RN Emergency department

Penn Medicine is dedicated to our tripartite mission of providing the highest level of care to patients, conducting innovative research, and educating future leaders in the field of medicine. Working for this leading academic medical center means collaboration with top clinical, technical and business professionals across all disciplines.

Position Description:

General Summary Statement

Our Nursing Department has achieved Magnet® recognition. Our nurses are involved and empowered to make changes in their work environment through council membership, research projects and education. A professional career ladder offers advancement, recognition and rewards to inspire nurses to professionally learn and grow. Most importantly our nurses feel supported and have a voice within the organization.

Our Emergency Department provides care to about 40,000 patients annually, with varying level of urgent medical care and consists of 33 treatment rooms, which utilizes a split flow design with a Provider directed care model. The Rapid Treatment Area has provided an innovative care model allowing wait times to be reduced and care initiated on arrival. We are Joint Commission Certified as an Advanced Primary Stroke Center and Chest Pain Center. The Department is staffed by RNs and Technicians. The Provider staff is composed of Board Certified Emergency Department Physicians and Physician Assistants and Nurse Practitioners. Our Emergency RNs are CEN and CPEN certified with expertise in adult and pediatric patient care. The Emergency Department is supported by a management team of Charge Nurses, Clinical Manager and Director, with an active Shared Governance model of councils for Professional Development, Education, Unit and Self-Scheduling Council. The Department offers a fast-paced environment, requiring the ability to re-prioritize throughout the day. Come join a motivated and innovative team, a supportive culture, in a leading and growing organization!

Minimum Requirements:

Education Training and Experience

Graduate of an accredited Nursing Program. Bachelors of Science in Nursing (BSN) is required.

Experience preferred, however training and specialty specific education programs are provided during orientation, and must be successfully completed as scheduled.

Basic computer skills: keyboard, mouse use. Ability to complete data entry on clinical documentation screens. Ability to use email and internet. Ability to successfully complete on the job training for CCH computer programs. Ability to practice critical thinking and organizational skills. Ability to speak, read, write and understand English.

Licensure/Certification

Current Pennsylvania RN License.

CPR certification required. ACLS, PALS certification required, or must or must complete within 12 months of hire. Certification of CEN or CPEN preferred.

SCHOOL OF SOCIAL WORK

BACHELOR OF SOCIAL WORK

Guided by the National Association of Social Work (NASW) Code of Ethics and the Council for Social Work education (CSWE), the **Bachelor of Social Work (BSW)** program in the School of Social Work at Temple's College of Public Health prepares students for entry-level generalist social work practice with individuals, families, communities, and organizations. *Social work is a licensed profession and BSW graduates are eligible for licensure. For license requirements by state or province view the this [interactive map](#) provided by the [Association of Social Work Boards \(ASWB\)](#).*

The *School of Social Work* is committed to eliminating social, political and economic injustices for poor and oppressed populations and advancing the quality of life for all. Our faculty are committed to fostering societal transformation through education that emphasizes solutions and action; research that generates evidence-based strategies to resolve problems at local, national, and global levels; and public service that shares this knowledge with a wider audience. In every project we undertake, we actively collaborate with communities, agencies, and organizations to ensure the voices and requirements of our constituents are heard and addressed.

Students engage with a curriculum emphasizing societal transformation, delving into topics including institutional racism, health disparities, and poverty, while adopting a person-in-environment perspective to comprehend the importance of cultural humility, grasp the interaction of biological and social elements in human development, analyze dynamics within families, organizations, and communities, evaluate programs, identify forms of oppression, and cultivate advocacy skills.



Individuals who have earned a BSW within the past five years may be eligible for the Advanced Standing MSW program. The Advanced Standing MSW can be completed full time in 12 months or part time in 18 months. It is not an accelerated degree program.

Alumni Highlights



Astrid Uhl
BSW '21, MSW 22

Program Manager at TU School of Social Work Previous Employment—
Contract Writer and Data Coordinator at Narrative Maps, LLC
Data Coordinator at Child Health Equity Lab, Temple University
Visitation Coach Intern at Turning Points for Children, CUA 9

Example Job Description

Social Work

Social Worker | Commonwealth of VA Careers

Qualifications

BSW required (graduation from a CSWE-accredited undergraduate or graduate social work program)

Knowledge of acute and persistent mental illnesses/forensic issues, person-centered treatment, discharge planning, and community resources available to those with mental illnesses

Professional work experience with adults with serious mental illness

Knowledge of hospital and community mental health systems

Ability to form therapeutic relationships with clients and their supports and to form effective partnerships with community service providers

Demonstrated skills in interviewing, assessment, problem-solving, professional collaboration, and the ability to coordinate community and agency resources

Experience in discharge planning

Experience working with Electronic Medical Records/interfaces from other software programs

Bi-lingual

Veteran

The successful applicant must pass a criminal background investigation, drug screening test and employment reference check

The applicant must have the ability to perform at the level of physical demands noted on the Employee Work Profile and the verified ability to perform the essential functions of the position

Responsibilities

Conduct assessments and evaluations to understand the client's concerns, challenges, and goals

Knowledge of interviews, standardized assessments, and other diagnostic tools to gather information about clients' mental health, emotional well-being, relationships, or specific issues they are facing

Developing and implementing treatment and discharge plans in collaboration with clients, family members, and the treatment team

Provide PSR interventions;

Develop and maintain partnerships with Community Service Providers

Document interventions; and be the link between the WSH treatment team, clients' families, and a person that supports recovery

Provide immediate support and intervention during crises or emergencies

Help clients manage overwhelming situations, such as trauma, abuse, suicidal ideation, or severe emotional distress, by providing emotional support, safety planning, and appropriate referrals if necessary

Department of Social and Behavioral Sciences

Bachelor of Science in Public Health

The [Bachelor of Science in Public Health](#) program prepares students for diverse careers by providing them with a strong foundation in the core areas of public health. This interdisciplinary program trains students in program planning, health communication, analytic research skills, and health education, with an emphasis on critical thinking. We value student centered learning, community engagement, and training opportunities that are grounded in health equity and social justice. Our program transforms students to become confident, competent public health professionals that can advocate for positive change within individuals, communities, and organizations.

Areas of focus include nutrition, sexual health, substance use and dependency, mental health, HIV/AIDS, maternal and child health, community health, prevention, and research.

The Department of Social and Behavioral Sciences strives to promote healthy communities and train those who excel in public health practice and research. We are committed to understanding and addressing the needs of vulnerable and underserved populations by leading and engaging in education, research, and service, often in collaboration with the community. We prepare graduates for exciting career paths as community health educators, counselors and practitioners, policy makers and trailblazing researchers.



The Department of Social and Behavioral Sciences offers a [4+1 BSPH/MPH program](#). The 4+1 BSPH/MPH is a rigorous 5-year program in which outstanding public health majors will have the opportunity to acquire a Bachelor of Science (BS) in Public Health and Master of Public Health (MPH). The +1 Accelerated BS in Public Health/MPH program is currently available with our [MPH in Applied Biostatistics](#), [MPH in Epidemiology](#), [MPH in Health Policy and Management](#) and [MPH in Social and Behavioral Sciences](#) programs. Public Health majors should apply during the spring semester of their sophomore year or when they have four semesters remaining in the undergraduate program. Students should speak with their advisor or contact Caite Wolak, the undergraduate public health program director for more information.

Alumni Highlights



Carolyn Bresnahan, MPH

Graduated from the accelerated 4+1 BSPH to MPH program - May 2019 – BS in Public Health and May 2020 – MPH in Social and Behavioral Sciences

Research Associate - Johns Hopkins University, Bloomberg School of Public Health

Dionne Smith, BSPH, CHES – May 2019 – B.S. in Public Health



*Evidenced Based Program Coordinator for NYC Teens Connection
NYC Department of Health and Mental Hygiene*

Example Job Description

Public Health

Health Educator at Children's Hospital of Philadelphia in Philadelphia, Pennsylvania

Job Summary

Provides home visits to a case load of 5-6 pregnant women or children, serves as a health and safety resource to other members on the home visiting team (4 other home visitors) and in general to the Early Head Start program. The health educator supports those on the team and families served by the team with direct health education service, referral, and advocacy. Health data entry. Assures that services are in compliance with the Head Start Performance Standards.

Job Responsibilities

- Provides direct health and child development focused home visits to case load of pregnant women or to families with children. Completes necessary documentation in a timely manner.
- Makes assessment of families and staff needs for education, information, referral and advocacy related to health, safety, injury and disease prevention.
- Addresses families and staff needs by creating and implementing individual and group plans that includes goals and objectives.
- Creates or uses pre-existing curricula to deliver training to staff and families on health and safety topics such as well child health care, home safety and care of children with special needs.
- Collects and verifies children's health records and performs data entry using the programs data system. Generates general mailings for children's health records and provides health reports to the team and health coordinator as needed and per request.
- Assures documentation of health status is in compliance with national recommendations and the Head Start Performance Standards.
- Serves as a leader in valuing child and family health and injury prevention.

Preferred Education, Experience & Cert/Lic

- A bachelors' degree in Health Education, Public Health or a related field is preferred.
- Experience working with children and families preferred.
- Familiarity with the Philadelphia urban community preferred; demonstrated ability to communicate effectively with the urban population is required, 2 plus years preferred.

Additional Technical Requirements

- Ability to effectively communicate orally and in writing is required.
- Experience in public health, community health, child and family health and/or injury prevention preferred.
- Ability and interest in working collaboratively and as a leader on a team is required.
- Culturally relevant sensitivity with target population required.
- Ability to approach conflicts and creatively solve problems.

College of Public Health Undergraduate Minors & Certificates

Certificates

- American Sign Language Certificate
- Linguistics Certificate
- Emergency and Sports Injury Management Certificate
- Emergency Medical Technician Certification



Minors

- Applied Epidemiology Minor
- Nutrition Minor
- Public Health Minor
- Global Health Minor
- Health Information Management Minor
- Health Policy and Management Minor