

# Temple University

## College of Public Health

Guide to Undergraduate Majors and Minors  
2022-23 Academic Year



## **Table of Contents**

<b>Communication Sciences and Disorders .....</b>	<b>5</b>
<b>Speech, Language and Hearing Science .....</b>	<b>5</b>
<b>SLH Job Description .....</b>	<b>6</b>
<b>Health Services Administration and Policy .....</b>	<b>7</b>
<b>Health Information Management .....</b>	<b>7</b>
<b>HIM Job Description .....</b>	<b>8</b>
<b>Health and Rehabilitation Sciences .....</b>	<b>9</b>
<b>Health Professions .....</b>	<b>9</b>
<b>HP Job Description .....</b>	<b>10</b>
<b>Health Studies.....</b>	<b>11</b>
<b>Health Studies Job Description.....</b>	<b>12</b>
<b>Recreational Therapy.....</b>	<b>13</b>
<b>RT Job Description .....</b>	<b>14</b>
<b>Kinesiology .....</b>	<b>15</b>
<b>Exercise and Sport Science .....</b>	<b>15</b>
<b>ESS Job Description.....</b>	<b>16</b>
<b>Kinesiology.....</b>	<b>17</b>
<b>KINS Job Description.....</b>	<b>18</b>
<b>Nursing.....</b>	<b>19</b>
<b>Nursing Job Description.....</b>	<b>20</b>
<b>Social Work .....</b>	<b>21</b>
<b>Social Work Job Description .....</b>	<b>22</b>
<b>Social Behavioral Sciences .....</b>	<b>23</b>
<b>Public Health.....</b>	<b>23</b>
<b>PH Job Description.....</b>	<b>24</b>
<b>CPH Minors &amp; Certificates .....</b>	<b>25</b>

## **The Temple University College of Public Health is part of a new movement that transforms public health for the 21st century.**

The mission of Temple University's College of Public Health is to prepare our students to become researchers, practitioners and educators. Collaborating across health-related disciplines, we address community needs, create evidence-based solutions, and deliver effective, compassionate care.

### **Statement of Goals:**

The following is a statement of goals for the College of Public Health in the areas of academics and instruction, research and scholarship, service and community engagement, innovation and entrepreneurship, and alumni engagement and development:

**Goal #1: Academics and Instruction** – To provide high-quality, comprehensive and interdisciplinary instruction, through didactic education and engagement in the community, in order to prepare the next generation of health practitioners and researchers to be ready to address the public health and social welfare demands of the day.

**Goal #2: Research and Scholarship** – To develop and grow a diverse body of research that reflects the needs of the community and the expertise of our faculty, and to provide our undergraduate and graduate students with research experiences that will expand the existing evidence base, develop new health interventions, inform policy, and translate research findings into practice to improve the health of populations.

**Goal #3: Service and Community Engagement** – To engage with the community at the regional, national and global levels by translating and disseminating academic expertise into practice. Across the college, such services may include needs assessments, planning, evaluations, policy analysis, and clinical services including healthcare, counseling and various therapeutic services. To serve as a resource to public health practitioners, health professionals, researchers, and elected officials who work to maintain and improve the public's health.

**Goal #4: Innovation and Entrepreneurship** – To enhance the learning experience for students and faculty alike through the use of existing and emerging technologies, as well as to develop new and innovative approaches to public health practice and research.

**Goal #5: Student and Alumni Engagement and Development** – To ensure the success of the college's mission to promote interdisciplinary collaboration in practice and research that extends beyond the walls of the institution, by developing new resources to support our existing students and by actively engaging with alumni.

**The College of Public Health offers fully accredited undergraduate and graduate programs in seventeen areas, including seven bachelors', eleven masters', four accelerated degree options and eleven doctoral degrees.**

# College of Public Health Departments & Undergraduate Programs

## Department of Communication Sciences and Disorders

- Bachelor of Arts in Speech, Language and Hearing Science
- Undergraduate Certificates:
  - American Sign Language
  - Linguistics

## Department of Health Services Administration and Policy

- Bachelor of Science in Health Information Management
- Undergraduate Minors
  - Health Information Management
  - Global Health
  - Health Policy and Management

## Department of Health and Rehabilitation Sciences

- Bachelor of Science in Health Professions
- Undergraduate Certificate:
  - Emergency and Sports Injury Management
- Bachelor of Arts in Health Studies
- Bachelor of Science in Recreational Therapy

## Department of Kinesiology

- Bachelor of Science in Exercise and Sport Science
- Bachelor of Science in Kinesiology

## Department of Nursing

- Bachelor of Science in Nursing

## School of Social Work

- Bachelor of Social Work

## Department of Social and Behavioral Sciences

- Bachelor of Science in Public Health
- Undergraduate Minors:
  - Applied Epidemiology
  - Nutrition
  - Public Health

# Department of Communication Sciences and Disorders

## **Bachelor of Arts in Speech, Language and Hearing Science**

The Bachelor of Arts in **Speech, Language and Hearing Science (SLH)** prepares students for graduate programs in speech-language pathology or in education, social work, or various other health professions. An SLH graduate degree can lead to certification and licensure as a speech-language pathologist or audiologist.

Students receive a solid foundation in the structure and processes involved in typical speech and language production and perception, and in hearing. This includes comprehensive coursework in the biological, neurological, acoustic, psychological, developmental, and linguistic bases of speech, language, and hearing.



### **Speech Language Hearing Facts**

SLH is the identification and management of communication problems (i.e. delayed language development, stuttering, aphasia).

Speech language pathologists provide professional services in many types of facilities such as schools, nursing homes, rehabilitation clinics.

**Graduate school is required to obtain entry-level positions.**

ASHA is the American Speech Language Hearing Association: [www.asha.org](http://www.asha.org)

Graduates with a major in Speech, Language & Hearing Science will satisfy Standard III-B (Basic Communication Processes) of the Knowledge and Skills Assessment required by the American Speech-Language-Hearing Association.

## **Alumni Highlights**



### **Hail Stickler**

***May 2015 B.A. in Speech Language Hearing Science***

***August 2017 M.A. in Speech Language Hearing Science***

***Student is employed with the Camden City School District as a Speech Language Therapist and completing clinical fellowship***



### **Kala Rivoli**

***May 2017 B.A. in Speech Language Hearing Science***

***Student is a Speech Language and Hearing graduate student at the University of Delaware. Student is completing her field practicum at ManorCare in Wilmington, Delaware***



# Example Job Description

## Speech, Language Hearing



St. Christopher's  
Hospital for Children

### Speech Pathologist

#### Description

**Job Summary:** A Speech-Language Pathologist will be responsible for the assessment, treatment planning, therapeutic interventions, re-assessments and discharge planning of patients referred for Speech-Language Therapy as well as Swallow Evaluation and treatment. The Speech-Language Pathologist will also participate in program development, quality improvement, problem solving and productivity improvement in a flexible interdisciplinary fashion.

**Skills & Abilities:** This position is responsible for the assessment and treatment of patients who persistently demonstrate communication deficits in any modality: speaking, listening, reading and/or writing. This position is also responsible for any patient who has difficulty managing his/her secretions or in swallowing. This may include a variety of diagnoses.

#### Qualifications:

**Training & Education:** CPR. Master's Degree in SLP.

**Experience:** Required: Pediatric Affiliation. Desired Previous 1-2 years Pediatric Experience

**Supervisory Responsibility:** N/A

**Required Licenses:** Licensed in Pennsylvania

**JOB:** Therapy And Rehabilitation

**PRIMARY LOCATION:** Philadelphia, Pennsylvania

**HOSPITAL LOCATION:** St. Christopher's Hospital For Children

**JOB TYPE:** Full-Time

**SHIFT TYPE:** Days

#### Duties:

- Monitor patients' progress and adjust treatments accordingly.
- Develop or implement treatment plans for problems such as stuttering, delayed language, swallowing disorders, or inappropriate pitch or harsh voice problems, based on own assessments and recommendations of physicians, psychologists, or social workers.
- Write reports and maintain proper documentation of information, such as client Medicaid or billing records or caseload activities, including the initial evaluation, treatment, progress, and discharge of clients.
- Participate in and write reports for meetings regarding patients' progress, such as individualized educational planning (IEP) meetings, in-service meetings, or intervention assistance team meetings.
- Evaluate hearing or speech and language test results, barium swallow results, or medical or background information to diagnose and plan treatment for speech, language, fluency, voice, or swallowing disorders.
- Complete administrative responsibilities, such as coordinating paperwork, scheduling case management activities, or writing lesson plans.
- Develop individual or group activities or programs in schools to deal with behavior, speech, language, or swallowing problems.
- Instruct clients in techniques for more effective communication, such as sign language, lip reading, or voice improvement.
- Administer hearing or speech and language evaluations, tests, or examinations to patients to collect information on type and degree of impairments, using written or oral tests or special instruments.

# Department of Health Services Administration & Policy

## **Bachelor of Science in Health Information Management**

Health Information Management (HIM) professionals design and manage health information systems, with special attention to quality and privacy of health information, in a wide range of settings such as hospitals, managed and ambulatory care, insurance and pharmaceutical companies, consulting firms, and public health organizations.

To prepare for an exciting career that combines expertise in clinical medicine, management, information technology, electronic health record systems, and finance, Temple University offers a Bachelor of Science degree in Health Information Management (BSHIM).

### **Health Information Management Facts**

HIM has recently been identified as one of the top fastest growing professions in the U.S. In fact, the demand for HIM professionals will increase by 11% between 2018 and 2028, according to the US Bureau of Labor Statistics (BLS). Based on a survey of Temple's graduates, 80% of graduates had secured a job at the time of graduation.

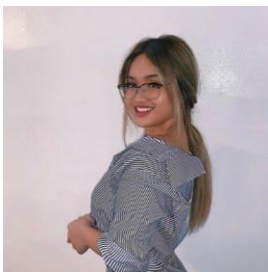
Program consists of one professional clinical internship, which occurs during the spring semester of the senior year.



### **Certification**

Students enrolled in the HIM program and in the last term of study are eligible to apply and sit for the examination of the American Health Information Management Association for the nationally recognized certification as a **Registered Health Information Administrator (RHIA)**.

### **Alumni Highlights**



**Vy Vu**

***B.S. in Health Information Management***

***Student is employed at Veeva Systems as an Associate Consultant***



**Erin Rondon**

***B.S. in Health Information Management***

***Student is employed at Office Practicum as an Application Analyst***

# Example Job Description

## Health Information Management



U.S. Department  
of Veterans Affairs

### Medical Records Technician (Coder) - BU \$56,124 to \$67,869/year

#### *Department of Veterans Affairs*

The **Department of Veterans Affairs (VA)** needs employees who possess the energy, compassion, and commitment to serve those who served our Country. Whatever the job title, every position in VA will give you a chance to make a meaningful and personal contribution to the lives of truly special and deserving people - our Veterans. VA professionals feel good about their careers and their ability to balance work and home life. VA offers generous paid time off and a variety of predictable and flexible scheduling opportunities. Working for VA is one of the most emotionally satisfying and professionally rewarding ways to dedicate the best within you to your Country's service.

This position is in the Coding Section of Health Administration Service (HAS) located at the Crescenz VA Medical Center - Philadelphia, Pa. Incumbent will be responsible for performing a quality review of patient care documents and assigning codes specific for the type of care provided using appropriate International Classification of Diseases Clinical Modification (ICD-10-CM), Current Procedural Terminology (CPT-4) and Healthcare Common Procedure Coding System (HCPCS) codes and various other duties as assigned.

#### Duties

Basic Functions: Independently plans and executes tasks related to medical record coding and documentation:

- Assigns codes to documented patient care encounters (inpatient and outpatient) covering the full range of health care services provided by this medical center. Patient encounters are often complicated and complex requiring extensive coding expertise. Applies advanced knowledge of medical terminology, anatomy and physiology, disease processes, treatment modalities, diagnostic tests, medications, procedures as well as the principles and practices of health services and the organizational structure to ensure proper code selection.
- Selects and assigns codes from the current version of several coding systems to include the ICD-10-CM, Diagnostic and Statistical Manual of Mental Disorders (DSM), CPT and HCPCS.
- Adheres to accepted coding practices, guidelines and conventions when choosing the most appropriate diagnosis, operation, procedure, ancillary or Evaluation and Management code to ensure ethical, accurate and complete coding.
- Monitors ever-changing regulatory and policy requirements affecting coded information for the full spectrum of services provided.
- Performs a comprehensive review of the patient record to abstract medical, surgical, ancillary, demographic, social, and administrative data to ensure complete data capture.
- Expertly searches the patient record to find documentation justifying code assignment.
- Utilizes the facility computer system and software applications to correctly code, abstract, record and transmit data to the national VA database in Austin.
- Identifies the principal diagnosis and principal procedures (when applicable) for every inpatient discharge.
- Codes inpatient professional fee services for identified admissions in support of the Medical Care Cost Recovery program.
- Establishes the primary and secondary diagnosis and procedure codes for billable outpatient encounters following applicable regulations, etc.
- Codes all Operating Room procedures reported in the Surgical Package of the VISTA hospital system.
- Updates codes for current inpatient and Contract Nursing Home admissions.
- Reviews and codes assigned Fee Service patient encounters (inpatient and outpatient).
- Codes diagnoses from paper forms for VA registries such as Agent Orange, Ionizing Radiation, Persian Gulf, Prisoner of War, etc.



# Department of Health and Rehabilitation Sciences

## Bachelor of Science in Health Professions

The **Bachelor of Science in Health Professions (BSHP)** is a degree which helps the student enter their chosen professional graduate program prepared with the prerequisites necessary for many of the health professions, e.g., physical therapy, occupational therapy, physician assistant practice, certified anesthesiology assistant.

The **Health Professions** major will better introduce students to a broader spectrum of health professions while still allowing students to tailor their education to best prepare them for their desired career through the strategic use of electives. Moreover, the interdisciplinary training across multiple disciplines will best prepare our graduates to enter the health workforce.



### Health Professions Facts

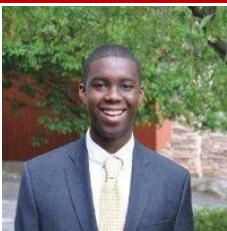
The HP degree offers a general studies program that includes the Kinesiology Core and an expanded Liberal Arts and Sciences.

Students are advised to maintain a minimum grade point average of 3.00 (B) since entry into graduate programs in the health professions is highly competitive. Although all required professional application courses must be completed with a minimum grade of C to count toward graduation, a grade of B or better in the specific prerequisites is required for almost all health profession graduate programs.

**The B.S. in Health Professions is also the major in the College of Public Health linked to the Accelerated Program for Physical Therapy (the 3+3 Program).** Students complete their major requirements in three years, and if accepted to the D.PT. they begin their PT requirements in the summer before their fourth year of undergraduate.

**The B.S. in Health Professions is linked programmatically to the M.S. in Athletic Training in the Department of Health and Rehabilitation Studies.** Students complete an accelerated timeline of the HP undergraduate requirements (3 years and summer classes). They are accepted to both the B.S. and the M.S. program and move directly into the M.S. program requirements in Summer after their third year of coursework.

## Alumni Highlights



**Andy Seraphin**  
*May 2017 B.S. in Kinesiology*

*Student was accepted and started a Doctor of Physical Therapy program in Fall 2017 at Duke University.*



**Shawn Golas**  
*May 2019 B.S. in Kinesiology*

*Student was accepted to the Doctor of Physical Therapy program at Temple University beginning Fall 2019.*

# Example Job Description

## Health Professions



### *Clinical Research Assistant I*

#### **Job Summary**

Under the direct supervision of the study team assists in the coordination of the details of the human research subject study and documentation concerning study protocols.

#### **Job Responsibilities**

- Providing technical and clinical support in the conduct of clinical studies
- Filing and office organization.
- Patient/research participant scheduling/history.
- Data collection; data entry; data management.
- Laboratory procedures.
  
- Consent subjects, with appropriate authorization and training.
  
- Research Study Compliance
- Adhere to an IRB approved protocols.
- Comply with Institutional policies, SOPs and guidelines.
- Comply with federal, state, and sponsor policies.

#### **May be called upon to:**

- Document and Report adverse events.
- Maintain study source documents.
- Complete case report forms (paper and electronic data capture).

#### **Required Licenses, Certifications, Registrations**

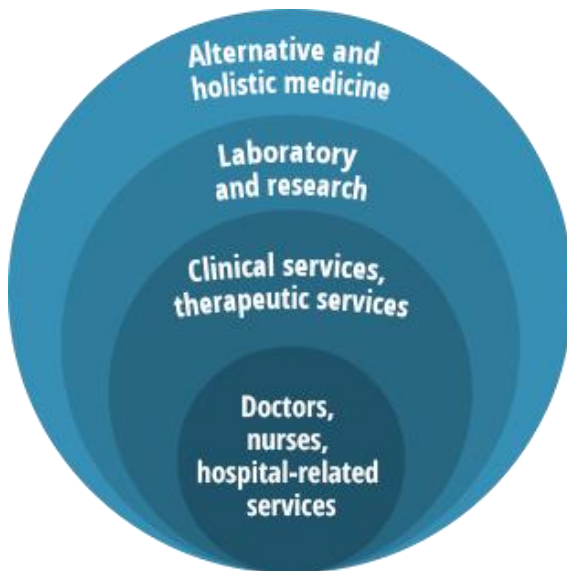
#### **Required Education and Experience**

- Required Education: AA in a related field
  
- Required Experience: 1+ year(s) relevant clinical research experience
- Preferred Education, Experience & Cert/Lic
- Preferred Education: BA/BS in a related field
- Additional Technical Requirements

## **Bachelor of Arts in Health Studies**

The **Bachelor of Arts in Health Studies** (BAHS) is a degree completion program exclusive to internal and external transfer students who are interested in health fields which do not require a breadth of bench sciences. **This program does not directly admit new incoming, first-year students.** Incoming first year students interested in Health Profession should first consider the BS in health professions. Students can utilize the flexibility of this program to explore a wide range of interests and to tailor their degree to their own interests in areas such as public health, health information management, or psychology.

The **Health Studies** major will have students taking a wide range of courses in public health, anatomy and physiology, statistics, and health care. This interdisciplinary approach will help prepare students to become professionals who seek healthcare solutions focused on interdisciplinary approaches and upstream interventions resulting in innovative solutions to patient and health care issues.



### **Health Studies Facts:**

#### **Flexible Curriculum:**

Students will have the opportunity to work with academic advisors and tailor their degree to their goals and interests.

#### **Interdisciplinary Curriculum:**

Coursework will provide background in the science of the human body, determinants of health, health communication, nutrition, health care systems, and much more.

#### **Extraordinary Educators:**

Students take courses from leaders and innovators across fields in the College of Public Health. These educators use innovative classroom approaches and a wealth of practical experience to bring real world lessons and skills to the curriculum.

## **Alumni Highlights**

## Example Job Description

Health Studies

**PUBLIC HEALTH**

management corporation

**Health Center Administrator**

The Health Center Administrator is responsible for oversight of daily operations of the health center including management of medical support team, monitoring patient flow, assisting with problem resolution, training staff, maintaining various regulatory compliance, and providing oversight of front-end financial aspects. This a high visibility position with frequent interaction with the general public, patients and their families, medical providers, and other support staff. This position requires a deep understanding of the roles and duties of reporting staff, and he/she must be able to carry out those functions when the need arises or otherwise solve problems to maintain the highest level of service to our patients.

### Responsibilities:

- Serve in a supervisory capacity to medical support staff which includes Medical Assistants, Medical Receptionists, and various students. Responsible for completing performance evaluations on staff and providing objective feedback on individual performance.
- Coordinate daily activities of medical support staff including making work assignments and effectively communicating this to the team
- Provide customer service in responding to inquiries/complaints from patients, outside agencies, and internal departments/programs
- Monitor front desk operations to ensure all revenue cycle policies/procedures are executed. Ensure that registration is completed appropriately, insurance eligibility verified, and appointments reconciled.
- Manage provider schedules to ensure timely care of patients, appropriate daily volumes, and completion of all chart notes in a timely fashion
- Oversee collection, documentation, and reconciliation of daily patient payments (co-pays/self-pays)
- Lead efforts in continuous quality improvement to increase efficiency and improve quality of services
- Assist team with problem resolution and escalate to senior staff when appropriate
- Provide ongoing training to existing staff, as well as training/orienting new staff
- Assist in the recruiting, hiring, and interviewing process of the medical support staff
- Work with senior staff to develop, disseminate, and implement policies/procedures
- Order medical and office supplies in a fiscally responsible manner
- Maintain compliance with CLIA, OSHA, Joint Commission, NCQA, VFC, Meaningful Use, and other regulations
- Assume medical support staff duties for absences and temporary staff shortages
- Assist senior staff with special projects and tasks as needed
- Other duties as assigned

### Education:

- A bachelor's degree in health care administration or related field

### Experience:

- 3+ years recent experience working in health care administration

### Salary:

- Based on education and experience.

## Department of Health and Rehabilitation Sciences

### **Bachelor of Science in Recreational Therapy**

The **Recreational Therapy** program offers undergraduate and graduate programs preparing students as entry-level and advanced recreational therapists to use structured activities as a means of psychosocial adaptation, health promotion, community engagement, rehabilitation, and life quality for children and adults of all ages who have illnesses and disabilities.

Students exit the program well prepared to embark on their career in Therapeutic Recreation. At the end of students' culminating fieldwork experience, clinical supervisors rate the professional knowledge and skills of the students based on the American Therapeutic Recreation Association (ATRA) Standards for Practice of Recreational Therapy. Of the 66 students who graduated from the BS in Recreation Therapy program in 2015 – 2016, a total of 99% were rated as meeting or exceeding expectations on all items.

### **Recreational Therapy Facts**



The **Recreational Therapy program** is designed to exceed certification requirements mandated by the National Council for Therapeutic Recreation Certification (NCTRC).

The BS Program has accreditation from the **Commission on Accreditation of Allied Health Education Programs/Committee on Accreditation of Recreational Therapy Education**.

The **Recreational Therapy program** offers an accelerated M.S. degree program (5 year B.S. to M.S. degree program), which provides the opportunity for qualifying students studying recreational therapy as an undergraduate to begin taking graduate level courses within their undergraduate curriculum and therefore

complete an M.S. in Recreation Therapy in a total of 5 years (4 year B.S. + 1 year M.S.).

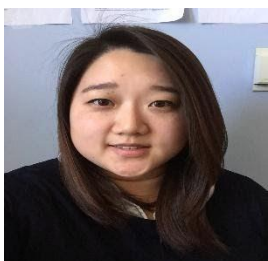
### **Alumni Highlights**



**Samantha Rock, CTRS**

***May 2015 B.S. in Therapeutic Recreation***

***Student is employed at Einstein Healthcare as a Psychotherapist***



**Janet Chung, CTRS**

***May 2018 B.S. in Therapeutic Recreation***

***Student is employed at Inglis House as an Adapted Technology Assistant***



# Example Job Description

## Recreational Therapy



### *CERTIFIED THERAPEUTIC RECREATION SPECIALIST*

**Summary:** We are currently seeking a Full Time Certified Therapeutic Recreation Specialist (CTRS) to provide evaluation, treatment, and discharge of patients referred to the Therapeutic Recreation service. The CTRS is an integral professional to meet the leisure and recreational needs of patients.

#### **Essential Accountabilities:**

- Plans, organizes, and implements recreation therapy to referred patients through individualized therapy sessions, group activities, leisure counseling and community outings for effective improvement in patient's physical, mental, and social well-being.
- Manages a full patient caseload as defined by the program where the therapist provides services. This includes patient evaluations/re-evaluation, treatment planning and implementation, development of resources for discharge, discharge planning, patient/caregiver education, leading patient groups and documentation as specified by the program. This may also include reporting in patient care conference and participating in patient/family/team meetings.
- Provides services on assigned weekends and holidays.
- Supervises student interns, volunteers, and new staff members as assigned with regard to Recreation Therapy.
- Must be able to stand, walk, stoop, and lift in order to effectively treat patients.
- Must be able to exert 50 pounds of force while lifting patients and/or devices.
- Must be able to have sufficient standing balance to guard ambulatory patients.
- May participate in the planning and implementation of hospital wide recreational activities including special events, leisure outings and evening and weekend activities, and community support groups.
- Attends all appropriate meetings including department meetings, programmatic team meetings, unit meetings, and recreation therapy specific meetings.
- Participates in and leads appropriate departmental and interdepartmental inservice educational programs.
- May participate in clinical studies, reporting, publishing, and research projects on behalf of Magee.
- May represent the hospital and department at professional conferences and seminars.
- Performs other related job duties as assigned.

#### **Qualifications:**

- Graduate of an accredited College or University with a minimum of a Bachelor's Degree in Therapeutic Recreation.
- Valid certification from the National Council for Therapeutic Recreation Certification. CPR certification required.
- 0-3 years' experience as a Therapeutic Recreation Specialist; clinical experience in acute rehabilitation or outpatient neurologic rehab preferred.
- Magee Rehabilitation Hospital is an equal opportunity employer. We do not discriminate on the basis of race, color, gender, gender identity, sexual orientation, age, religion, national or ethnic origin, disability or protected veteran status.

## Department of Kinesiology

### Bachelor of Science in Exercise and Sport Science

The Exercise and Sport Science program focuses on physical fitness and training related to two areas:

1. Health (involving populations that are either healthy or have pre-existing medical conditions)
2. Performance (involving populations whose primary goals are athletic, competitive or related to sports performance)

Our students pursue a wide range of career paths in university, corporate, commercial, community and clinical settings. Primary career opportunities include: exercise physiology, group exercise instruction, strength and conditioning/sport performance, and personal training.

This program can also be a foundation for graduate programs. It offers an innovative curriculum that incorporates hand-on learning opportunities, and program graduates are eligible to take several different professional examinations, including:

- The [American College of Sports Medicine](#) certification, for those who want to become exercise physiologists, group exercise instructors or personal trainers.
- The [National Strength and Conditioning Association \(NSCA\)](#) certification, for those who want to become personal trainers or strength and conditioning specialists.

#### **ESS prepares students to:**



Conduct pre-participation health screenings and fitness assessments; interpret and analyze results; and develop, implement, and instruct individualized and advanced exercise training programs for apparently healthy, clinical, and/or athletic populations.



#### **Alumni Highlights**

**Joy Miller**

***December 2018 B.S. in Kinesiology (Exercise & Sport Science)***

***Student is employed at Catapult Sports as a Product Support Technician***

# Example Job Description

## Exercise & Sport Science



### Power Train Sports & Fitness

#### *Sport Performance Coach*

The Performance Coach contributes to Power Train's success by conducting themselves in a professional demeanor that demonstrates the company mission and vision. They are also responsible to help improve the overall success of the business through new business development and client retention.

The Performance Coach will deliver on all of the performance objectives set forth by the company. In addition, the Performance Coach will focus on the team delivering unmatched results for our clients in a fun, engaging and competitive environment.

#### Key Job Responsibilities

Responsibilities and job functions include, but are not limited to:

- Model and promote Power Train mission and values through appropriate behavior, appearance, words and actions
- Uphold company mission by delivering training sessions that meet the Power Train standards for ratios and program design
- Responsible for the daily execution of all daily lead generating sales activities
- Responsible to write client programs
- Effectively conduct Free Trials designed to drive new business
- Execute on all daily sales and new business development activities
- Engage in opportunities to grow client count through high quality interactions and creative training sessions designed to drive overall membership growth and retention
- Ensure that the facility remains surgically clean, by executing on your daily cleaning and maintenance responsibilities
- Work to up-skill yourself through continuing education and self-development

#### Desired Skills and Experience

- College degree in Sports Management, Exercise Science, or National Strength and Conditioning Association
- Prior experience with coaching and/or sports performance training is a plus
- Able to perform and excel in a fluid and dynamic work environment
- Customer service orientation
- Results oriented, driven to succeed
- Must have a passion for sports, fitness and health
- Strong work ethic

## Department of Kinesiology

### **Bachelor of Science in Kinesiology**

The Department of Kinesiology **Bachelor of Science (B.S.) in Kinesiology** will prepare students to enter a variety of jobs in fields of physical activity, health promotion, and fitness /wellness. Demand for graduates to work in fields that integrate physical activity, health, and well-being is high now and for the foreseeable future, particularly because physical activity is one of the most important strategies in public health to prevent and manage chronic diseases.

The **Kinesiology** major expands the Department's undergraduate degree offerings, resulting in a better match with current trends in employment and the varied interests of Temple students seeking positions in the human movement professions. Students will learn cutting-edge knowledge and skills about Kinesiology and be able to incorporate courses from across the College of Public Health, preparing them with an interdisciplinary perspective for multiple career options. Graduates with this degree will be prepared to work with diverse populations, including people of various ages.



### **Alumni Highlights**



**Kamyar Maghazehe**  
*May 2017 B.S. in Kinesiology*

*Student is employed at Capital Health as an Exercise Physiologist*

# Example Job Description

## Kinesiology

### Future

**Our Company:** Future is an emerging health and fitness technology startup with a mission of leveraging technology to expand the reach one coach can have in order to ultimately create preventative healthcare that is both accessible and affordable to anyone, anywhere. We believe that everyone wants to live healthier, more active lives, but they struggle to find the support and guidance necessary to be successful.

### Full Job Description

This is not some algorithm, it is real coaches helping real people, in real time, anywhere in the world.\*

This is a fully remote, salaried position with benefits.

#### You Will:

- Develop fitness programs with individuals to create routines that assist clients in reaching their fitness goals
- Maintaining constant high level of communication and client contact through web and mobile applications to ensure goals are being met
- Update training plans and/or re-evaluate clients as needed to ensure optimal outcomes
- Participate in cross-functional teams to assist in company growth and performance operations
- Collaborate with our engineering & product team to continually enhance coaching tools and client experience

#### You Have:

- Bachelor's or Master's Degree in Exercise Science, Exercise Physiology, Sport Science, Sport Psychology, Kinesiology, Health and Wellness or a related field
- 1-2 years of relevant experience in coaching or training with elite professional and collegiate athletes or in a general population setting
- CSCS, NASM, SCCC, ACSM, CFSC (preferred)

Job Type: Full-time

#### Benefits:

- 401(k)
- Dental insurance
- Flexible spending account
- Health insurance
- Paid time off
- Parental leave
- Vision insurance

#### Schedule:

- Monday to Friday



## Department of Nursing

### Bachelor of Science in Nursing

The **Bachelor of Science (BS) in Nursing** provides the foundation to prepare expert nursing clinicians, educators, and leaders focused on primary health care for underserved and vulnerable populations.

Changes to the nation's healthcare system are demanding innovative and dedicated nurses with exceptional clinical experience and a strong background in evidence-based practice, the latest technology and strong leadership abilities. The Department of Nursing prepares graduates for the practice of professional nursing through rigorous academic and clinical coursework grounded in nursing science and related biological sciences, social sciences, and the arts.



The mission of the Temple University **Department of Nursing** is to provide excellence in nursing education, research, practice, and service to develop nursing professionals who will improve health outcomes for individuals, families and communities. The faculty of the Department of Nursing believes that health care is a basic human right. The faculty addresses the complex interactions of the determinants of health affecting local and global communities.

Students must apply to the BSN Program by February 1<sup>st</sup>. Students ARE NOT permitted to transfer into the BSN program without official acceptance into the program. Please contact an academic advisor for more information regarding the application process.



### Alumni Highlights



**William Clooney, RN**  
*May 2017 B.S. in Nursing*

*Student is employed at Bryn Mawr Hospital as an Intensive Care Unit Registered Nurse*



**Catherine-Lee Holmes**  
*May 2019 B.S. in Nursing*

*Student is employed at Virginia Hospital Center as a Registered Nurse on the Oncology Medical Surgical Floor*

# Example Job Description

## Nursing



### ***RN Emergency department***

**Penn Medicine** is dedicated to our tripartite mission of providing the highest level of care to patients, conducting innovative research, and educating future leaders in the field of medicine. Working for this leading academic medical center means collaboration with top clinical, technical and business professionals across all disciplines.

#### **Position Description:**

##### General Summary Statement

Our Nursing Department has achieved Magnet® recognition. Our nurses are involved and empowered to make changes in their work environment through council membership, research projects and education. A professional career ladder offers advancement, recognition and rewards to inspire nurses to professionally learn and grow. Most importantly our nurses feel supported and have a voice within the organization.

Our Emergency Department provides care to about 40,000 patients annually, with varying level of urgent medical care and consists of 33 treatment rooms, which utilizes a split flow design with a Provider directed care model. The Rapid Treatment Area has provided an innovative care model allowing wait times to be reduced and care initiated on arrival. We are Joint Commission Certified as an Advanced Primary Stroke Center and Chest Pain Center. The Department is staffed by RNs and Technicians. The Provider staff is composed of Board Certified Emergency Department Physicians and Physician Assistants and Nurse Practitioners. Our Emergency RNs are CEN and CPEN certified with expertise in adult and pediatric patient care. The Emergency Department is supported by a management team of Charge Nurses, Clinical Manager and Director, with an active Shared Governance model of councils for Professional Development, Education, Unit and Self-Scheduling Council. The Department offers a fast-paced environment, requiring the ability to re-prioritize throughout the day. Come join a motivated and innovative team, a supportive culture, in a leading and growing organization!

#### **Minimum Requirements:**

##### Education Training and Experience

Graduate of an accredited Nursing Program. Bachelors of Science in Nursing (BSN) is required.

Experience preferred, however training and specialty specific education programs are provided during orientation, and must be successfully completed as scheduled.

Basic computer skills: keyboard, mouse use. Ability to complete data entry on clinical documentation screens. Ability to use email and internet. Ability to successfully complete on the job training for CCH computer programs. Ability to practice critical thinking and organizational skills. Ability to speak, read, write and understand English.

##### Licensure/Certification

Current Pennsylvania RN License.

CPR certification required. ACLS, PALS certification required, or must or must complete within 12 months of hire. Certification of CEN or CPEN preferred.

# SCHOOL OF SOCIAL WORK

## BACHELOR OF SOCIAL WORK

The **Bachelor of Social Work (BSW)** program prepares graduates for entry-level, generalist social work careers with individuals, families, and groups in need. It gives students a broad perspective and a basic understanding of social work's values and ethics, diversity, social and economic justice, populations-at-risk, social work practice, human behavior and the social environment, social welfare policy and services, social work research, and a generalist field practicum.

The **School of Social Work** fulfills its mission of building social and economic justice through teaching, research and service. Our graduates tackle issues related to HIV/AIDS, mental health, substance abuse, homelessness, juvenile justice, health services, hospice services, community capacity building, violence against women, organizational diversity, child welfare, teenage pregnancy, elder abuse, and poverty.



**Advanced Standing** status may be awarded to those who apply for the Master of Social Work (MSW) degree program at Temple. Individuals who have earned a BSW within the last five years from a CSWE accredited program, have an *exemplary* undergraduate record and solid work/volunteer/internship experience may apply for the Advanced Standing MSW. Advanced Standing is not an accelerated degree program. It begins with a “Bridge” course (usually in the summer, but may be offered during other semesters depending on program site); then transitions into an advanced curriculum. The Advanced Standing MSW curriculum can be completed in one-year, full time.

## Alumni Highlights



**Breana Shaw, BSW, MSW**  
*May 2015 Bachelor of Social Work*  
*May 2016 Master of Social Work*

*Student is employed at ACHIEVEability as a Self-Sufficiency Coach*

## Example Job Description

### Social Work



#### ***Mental Health Clinician***

**Position Objective:** To prepare students to be successful in a traditional learning environment by providing exceptional, innovative and individualized services.

#### **Requirements:**

- Minimum bachelors degree in related field (psychology, social work, education, special education, child development).
- Experience working with you (at risk) in school, home or community (preferred)
- Excellent organizational, leadership and communication skills
- Ability to develop and implement individualized behavioral interventions
- Complies with a drug free workplace rules and board policy

#### **Essential Job Functions:**

- Develop, implement and oversee behavioral interventions
- Provide individual and group therapeutic sessions
- Educate students, families and staff on various intervention strategies
- Work closely with lead clinician
- Collect data on behavior management interventions
- Complete appropriate paperwork for accountability and outcome measures
- Work in a fast pace, high pressure environment within a multidisciplinary team

## Department of Social and Behavioral Sciences

### Bachelor of Science in Public Health

The [Bachelor of Science in Public Health](#) program prepares students for diverse careers by providing them with a strong foundation in the core areas of public health. This interdisciplinary program trains students in program planning, health communication, analytic research skills, and health education, with an emphasis on critical thinking. We value student centered learning, community engagement, and training opportunities that are grounded in health equity and social justice. Our program transforms students to become confident, competent public health professionals that can advocate for positive change within individuals, communities, and organizations. Areas of focus include: nutrition, sexual health, substance use and dependency, mental health, HIV/AIDS, maternal and child health, community health, prevention, and research.

The Department of Social and Behavioral Sciences strives to promote healthy communities and train those who excel in public health practice and research. We are committed to understanding and addressing the needs of vulnerable and underserved populations by leading and engaging in education, research, and service, often in collaboration with the community. We prepare graduates for exciting career paths as community health educators, counselors and practitioners, policy makers and trailblazing researchers.



The Department of Social and Behavioral Sciences offers a [4+1 BSPH/MPH program](#). The 4+1 BSPH/MPH is a rigorous 5-year program in which outstanding public health majors will have the opportunity to acquire a Bachelor of Science (BS) in Public Health and Master of Public Health (MPH). The +1 Accelerated BS in Public Health/MPH program is currently available with our [MPH in Applied Biostatistics](#), [MPH in Epidemiology](#), [MPH in Health Policy and Management](#) and [MPH in Social and Behavioral Sciences](#) programs. Public Health majors should apply during the spring semester of their sophomore year or when they have four semesters remaining in the undergraduate program. Students should speak with their advisor or contact Caite Wolak, the undergraduate public health program for more information.

### Alumni Highlights



#### Carolyn Bresnahan, MPH

*Graduated from the accelerated 4+1 BSPH to MPH program - May 2019 – BS in Public Health and May 2020 – MPH in Social and Behavioral Sciences*

*Research Associate - Johns Hopkins University, Bloomberg School of Public Health*

#### Dionne Smith, BSPH, CHES – May 2019 – B.S. in Public Health



*Evidenced Based Program Coordinator for NYC Teens Connection  
NYC Department of Health and Mental Hygiene*



## Example Job Description

### Public Health

#### Health Educator at Children's Hospital of Philadelphia in Philadelphia, Pennsylvania

#### Job Summary

Provides home visits to a case load of 5-6 pregnant women or children, serves as a health and safety resource to other members on the home visiting team (4 other home visitors) and in general to the Early Head Start program. The health educator supports those on the team and families served by the team with direct health education service, referral, and advocacy. Health data entry. Assures that services are in compliance with the Head Start Performance Standards.

#### Job Responsibilities

- Provides direct health and child development focused home visits to case load of pregnant women or to families with children. Completes necessary documentation in a timely manner.
- Makes assessment of families and staff needs for education, information, referral and advocacy related to health, safety, injury and disease prevention.
- Addresses families and staff needs by creating and implementing individual and group plans that includes goals and objectives.
- Creates or uses pre-existing curricula to deliver training to staff and families on health and safety topics such as well child health care, home safety and care of children with special needs.
- Collects and verifies children's health records and performs data entry using the programs data system. Generates general mailings for children's health records and provides health reports to the team and health coordinator as needed and per request.
- Assures documentation of health status is in compliance with national recommendations and the Head Start Performance Standards.
- Serves as a leader in valuing child and family health and injury prevention.

#### Preferred Education, Experience & Cert/Lic

- A bachelors' degree in Health Education, Public Health or a related field is preferred.
- Experience working with children and families preferred.
- Familiarity with the Philadelphia urban community preferred; demonstrated ability to communicate effectively with the urban population is required, 2 plus years preferred.

#### Additional Technical Requirements

- Ability to effectively communicate orally and in writing is required.
- Experience in public health, community health, child and family health and/or injury prevention preferred.
- Ability and interest in working collaboratively and as a leader on a team is required.
- Culturally relevant sensitivity with target population required.
- Ability to approach conflicts and creatively solve problems.

## College of Public Health Undergraduate Minors & Certificates

### **Certificates**

- American Sign Language Certificate
- Linguistics Certificate
- Emergency and Sports Injury Management Certificate
- Emergency Medical Technician Certification



### **Minors**

- Applied Epidemiology Minor
- Nutrition Minor
- Public Health Minor
- Global Health Minor
- Health Information Management Minor
- Health Policy and Management Minor